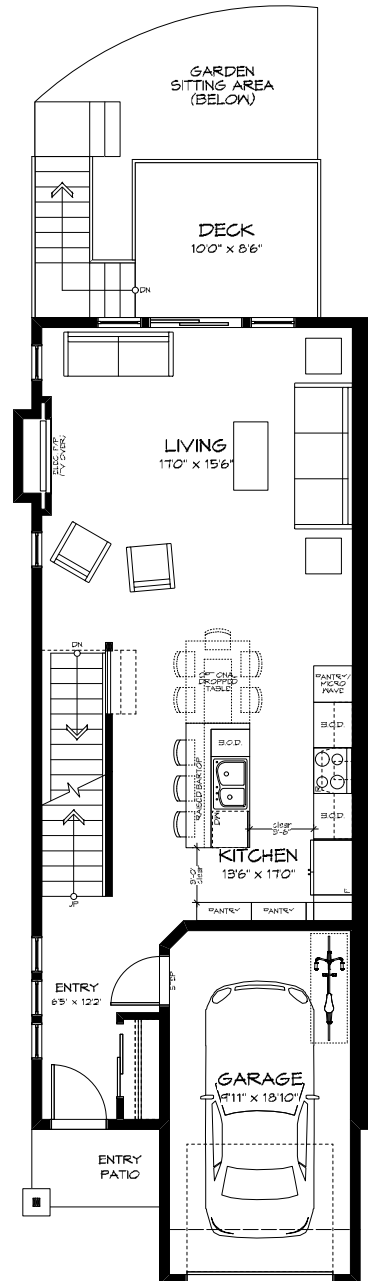


**3 BEDROOM, 3 BATHS
WITH BASEMENT**

Unit 6 - 2087 Sq. Ft. (1518 Sq. Ft. Finished)

Unit 7 - 2117 Sq. Ft. (1525 Sq. Ft. Finished)

Unit 8 - 2099 Sq. Ft. (1506 Sq. Ft. Finished)

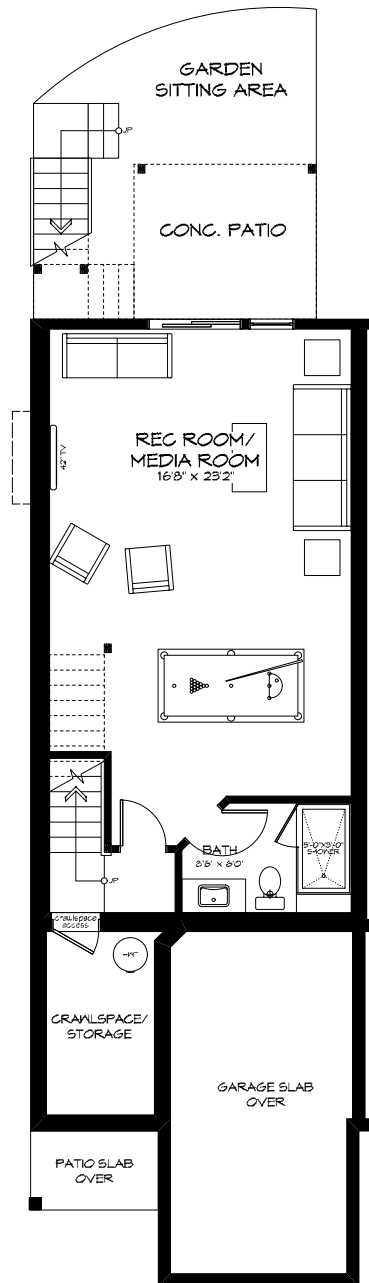


○ Typical Main Floor Plan (Units 6-8)
0 5 10 FT



Rebecca Ross
RE/MAX Camosun
tel: 250.744.3301
toll free: 1.800.663.2121
fax: 250.744.3904
www.rebeccaross.ca

Note: In the interest of maintaining high standards, the developer reserves the right to modify plans, specifications, and design without prior notice. Sizes and dimensions are approximate, not to scale and may vary with actual strata plan and survey.

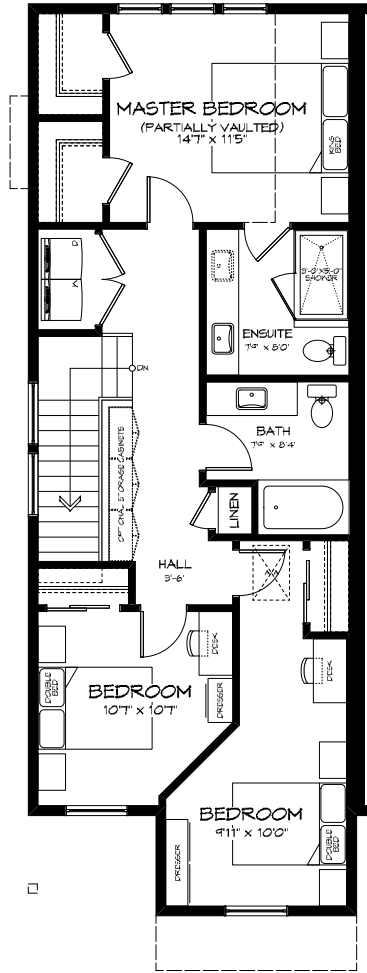


○ Typical Basement Floor Plan (Units 6-8)
0 5 10 FT



Rebecca Ross
RE/MAX Camosun
tel: 250.744.3301
toll free: 1.800.663.2121
fax: 250.744.3904
www.rebeccaross.ca

Note: In the interest of maintaining high standards, the developer reserves the right to modify plans, specifications, and design without prior notice. Sizes and dimensions are approximate, not to scale and may vary with actual strata plan and survey.



○ Typical Upper Floor Plan (Units 6-11)



Rebecca Ross
RE/MAX Camosun
tel: 250.744.3301
toll free: 1.800.663.2121
fax: 250.744-3904
www.rebeccaross.ca

Note: In the interest of maintaining high standards, the developer reserves the right to modify plans, specifications, and design without prior notice. Sizes and dimensions are approximate, not to scale and may vary with actual strata plan and survey.